



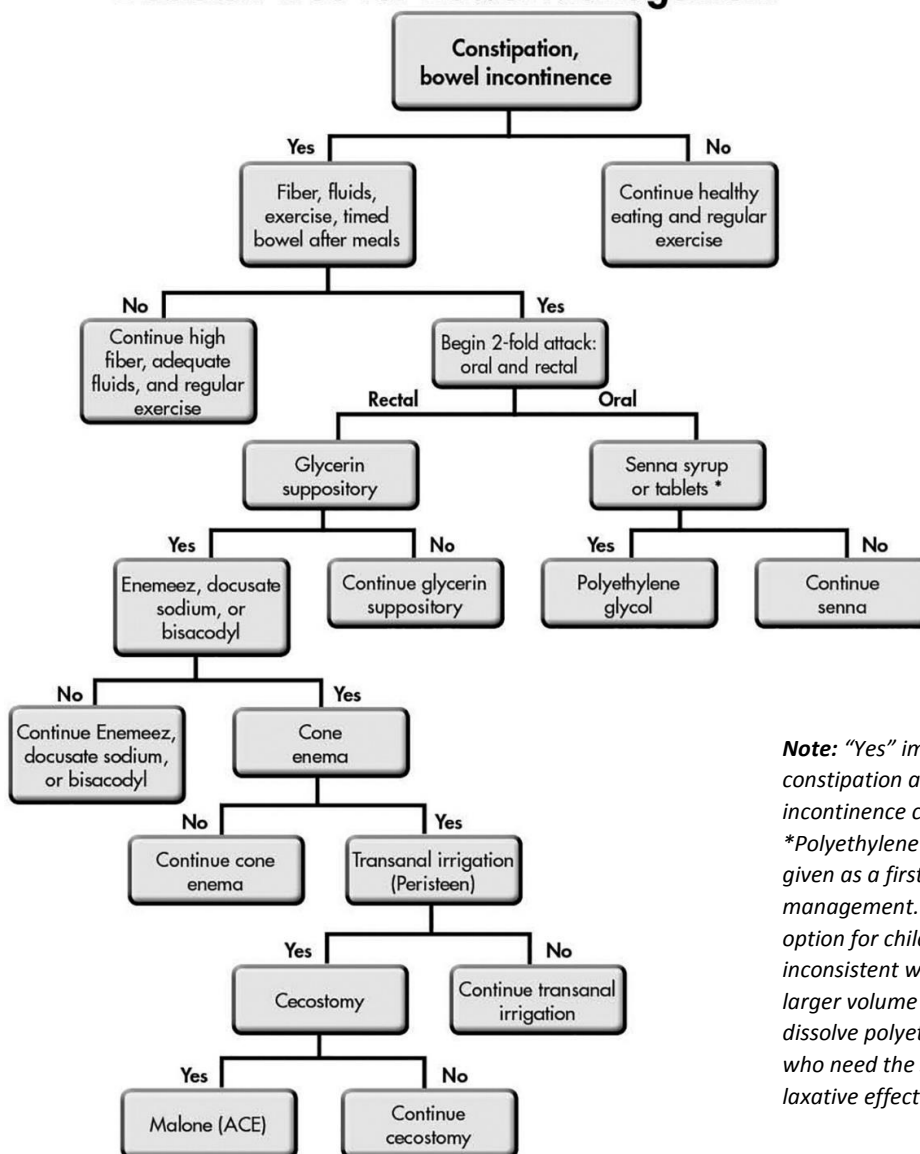
Bowel Management

The providers at PSA are committed to providing optimal UROLOGIC care to your child. Since most patients with neurogenic bladder also have neurogenic bowel, it is imperative to your child's UROLOGIC health to have optimal ENTERIC (bowel) health. Below is a treatment algorithm for management of constipation and encopresis (poop accidents) in patients with neurogenic bowel.

Please share this with your primary care provider who can help you with these issues. Contact your gastroenterologist for further discussion as well.

Contact us for assistance if your primary gastroenterologist recommends ACE/cecostomy, which are surgical procedures we perform.

Decision Tree for Bowel Management



Note: "Yes" implies constipation and/or incontinence continue.
*Polyethylene glycol may be given as a first step to medical management. Senna is a good option for children who are inconsistent with drinking the larger volume necessary to dissolve polyethylene glycol or who need the stimulant laxative effect.